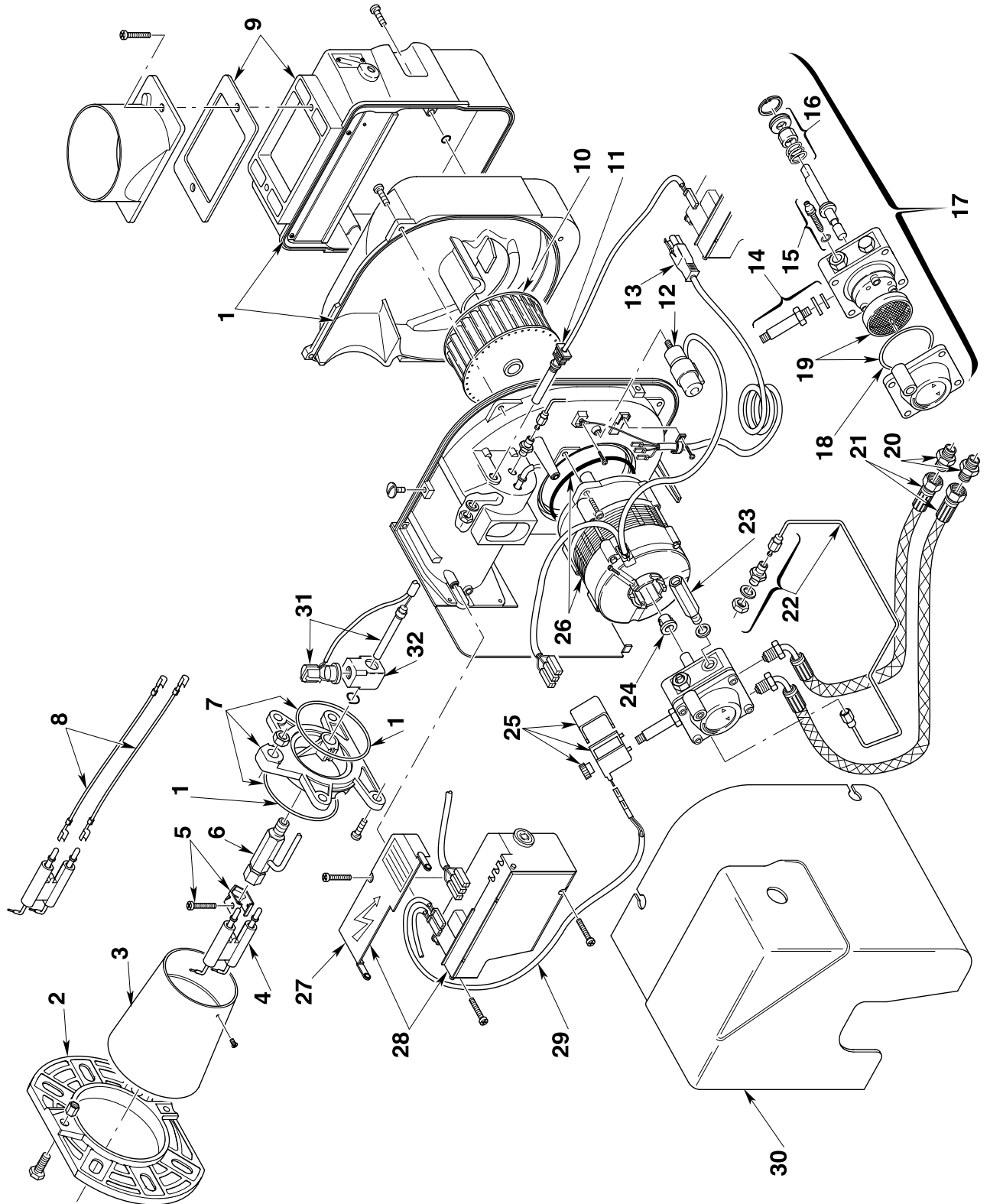


Bruciatore di gasolio • Light oil burner • Brûleur fioul • Öl-Gebläsebrenner
Quemador de gasóleo

OMEGA 80 RDB1R

COD. 3748365

TIPO / TYPE / TYP 499T



N. COD.	DESCRIZIONE	DESCRIPTION	DESCRIPTION	BESCHREIBUNG	DENOMINACIÓN	MATRICOLA BRUCIATORE BURNER SERIAL NUMBER MATRICULE BRULEUR BRENNER KENN-NUMMER MATRICULA QUEMADOR
1	3008878	KIT GUARNIZIONI	KIT JOINTS	DICHTUNG ERSATZ	KIT JUNTAS	≤ 01013XXXXXX ≥ 01023XXXXXX
2	3006384	FLANGIA	BRIDE	KESSELFLANSCH	BRIDA	
3	3008768	BOCCAGLIO	GUEULARD	FLAMMROHR	TUBO LLAMA	
4	3007513	GRUPPO ELETTRODI	GROUPE ELECTRODES	ELEKTRODENBLOCK	ELECTRODOS	
5	3006552	FASCETTA	SUPPORT ELECTRODES	ELEKTRODEN HALTERUNG	SOPORTE ELECTRODOS	
6	3008855	PORTAUGELLO	NOZZLE HOLDER	DÜSENSTOCK	PORTABOQUILLA	
7	3008845	COLLARE	COLLIER	BRENNERFLANSCH INNEN	COLLARÍN	
8	3008794	COLLEGAMENTO A.T.	HIGH VOLTAGE LEAD	KABEL ZÜNDELEKTRODEN	CABLES ELECTRODOS	
9	3008647	GRUPPO SERRANDA ARIA	AIR DAMPER ASSEMBLY	LUFTREGULIERUNG	REG. REGISTRO DEL AIRE	
10	3005708	GIRANTE	FAN	GEBLÄSERAD	TURBINA	
11	3008646	FOTORESISTENZA	P.E. CELL	FOTOWIDERSTAND	FOTORESISTENCIA	
12	3007479	CONDENSATORE 4 µF	CAPACITOR 4 µF	KONDENSATEUR 4 µF	CONDENSADOR 4 µF	
13	3002837	CONDENSATORE 4,5 µF	CAPACITOR 4,5 µF	KONDENSATOR 4,5 µF	CONDENSADOR 4,5 µF	
14	3008863	COLLEGAMENTO	LEAD	ANSCHLUIßKABEL	CABLES	
15	3007582	VALVOLA	NEEDLE VALVE	MAGNETVENTIL KÖRPER	VÁLVULA	
16	3000439	REGOLATORE	REGULATOR	DRUCKREGULIERSCHRAUBE	REGULADOR	
17	3008654	ORGANO DI TENUTA	PUMP SEAL	WELLENDICHTUNG	CONJUNTO ESTANQUIDAD	
18	3007162	ANELLO OR	PUMP	ÖLPUMPE	BOMBA	
19	3008653	FILTRO - ANELLO OR	O-RING	O-RING-DICHTUNG	JUNTA TÓRICA	
20	3009068	RACCORDO	FILTER - O-RING CONNECTOR	FILTER - O-RING DICHTUNG	FILTRO - JUNTA TÓRICA	
21	3005720	TUBO FLESSIBILE	FLEXIBLE	ANSCHLUIßNIPPEL	RACORD	
22	3008842	TUBO E RACCORDO	TUBE AND CONNECTOR	ÖLSCHLAUCH	TUBO FLEXIBILE	
23	3008876	PRESA DI PRESSIONE	PRESSURE GAUGE	DRUCKANSHLUß	TUBO - RACORD	
24	3000443	GIUNTO	JOINT	DRUCKANSCHLUß	ENCHUFE	
25	3008648	BOBINA	COIL	PUMPENKUPPLUNG	ACOPLAMIENTO	
26	3008650	MOTORE	MOTOR	MAGNETVENTIL - SPULE	BOBINA	≤ 01013XXXXXX ≥ 01023XXXXXX
27	3002836	MOTORE + CONDENSATORE	MOTOR + CAPACITOR	MOTOR	MOTOR	
28	3008652	PROTEZIONE	MOTOR + CONDENSATEUR	MOTOR + KONDENSATOR	MOTOR + CONDENSADOR	
29	3008851	APPARECCHIATURA 535RSE/LD	CONTROL BOX 535RSE/LD	PROTECTION	PROTECCIÓN	
30	3008879	COLLEGAMENTO	LEAD COIL	DECKEL	CAJA DE CONTROL 535RSE/LD	
31	3002437	GRUPPO RISCALDATORE	COVER	ANSCHLUIßKABEL MAGNETVENTIL	CABLES ELECTROVÁLVULA	
32	3008856	RACCORDO	HEALTER ASSEMBLY CONNECTOR	BRENNERHAUBE	ENVOLVENTE	
				VORMÄRMERSATZ	CONJUNTO CALENTADOR	
				NIPPEL	RACORD	